

# IHECS WELCOME TO INTERNATIONAL STUDENTS



INTERNATIONAL  
EXCHANGES

**IHECS**

Journalism & Communication



<b>WELCOME TO BELGIUM!</b>	5
----------------------------	---

<b>WELCOME TO BRUSSELS!</b>	6
-----------------------------	---

<b>WELCOME TO IHECS!</b>	8
--------------------------	---

• A word from the head of school	8
• IHECS in numbers	9
• International Exchanges Department Staff	10

<b>PARTNERS</b>	12
-----------------	----

• European partners	13
• Belgian partners	14
• Outside Europe partners	15

<b>TIPS FOR LIVING IN BRUSSELS</b>	17
------------------------------------	----

• Cost of living	17
• Bank Account	17
• Transport	17

Travelling in Brussels

Travelling in and out of Belgium

• Sport	18
• Accommodation	18
• IHECSperience	19

<b>IHECS PROGRAMS</b>	19
-----------------------	----

• General Programs	19
• English Program	20
• How to apply	20
• Academic Calendar	21

<b>FAQ</b>	21
------------	----





# WELCOME TO BELGIUM!

Studying at IHECS means living for a few months in Belgium. But where is this country? Belgium is a small European country located between France, Germany, Grand Duchy of Luxembourg and the Netherlands. Belgium is a multicultural country. We have 3 national languages: French, Dutch and German. In Brussels, the predominant language is French.

As soon as you arrive in Belgium, you will notice that it is really easy to travel all over Europe: by train, by plane, by coach... Plenty of possibilities!



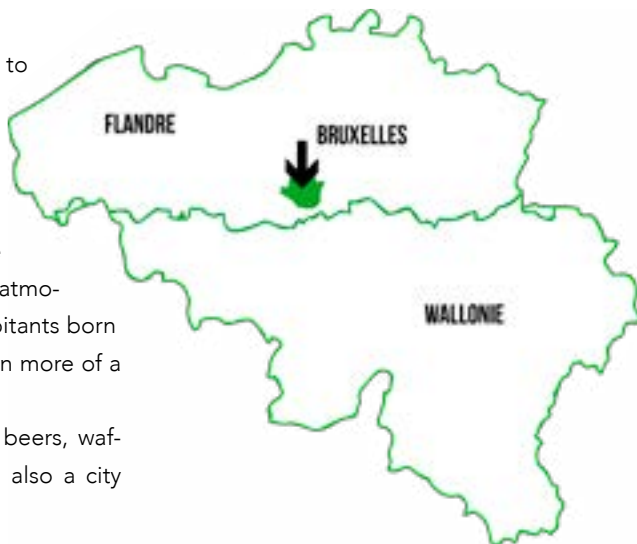
# WELCOME TO BRUSSELS!

We welcome you to the capital of Belgium, to the heart of the European Union, and to the crossroads of philosophical and artistic trends! From the Place Royale to the Grand-Place, during your Erasmus stay you will have the opportunity to sample some of the many different ways in which Brussels serves up the art of living.

IHECS is just a stone's throw from the Grand-Place, a UNESCO world heritage site, in the heart of the city's historic centre – which is full of fascinating blind alleys, shopping galleries, fashionable boutiques and friendly café's terraces. Enjoy a bag of fries, delicious chocolate pralines or a hot waffle. Grab for yourself the latest fashionable garments, or check out the famous shops selling comic books, both traditional and new. Taken together, all these little pleasures are sure to enhance your time in Brussels!

But Brussels has a lot more to offer! French and Flemish cultures are blended with a startling mix of nationalities from around the world to give the Belgian capital of one million people a cosmopolitan atmosphere. With over half its inhabitants born outside the city, Brussels is even more of a melting pot than New York. Probably most well-known for beers, waffles and chocolate, Brussels is also a city

of cosy cafés, neighborhood markets and historical landmarks such as the Manneken Pis, the Atomium and the Grand Place. For students interested in exploring other parts of the continent, Brussels is within just a few hours of most major European cities.



## Tip n° 1

### Look up!

Raise your eyes and discover the curves of Brussels Art Nouveau. Tour the Museum of Natural Sciences and behold the marvel of 30 dinosaurs on display. Observe the sun glinting off the Atomium's steel balls or the European quarter's glass towers. Brussels is THE capital of wonders to discover!

## Tip n° 2

### Breathe deeply!

Brussels is dotted with a lot of green spaces, so why not make the most of them? In the city centre alone, you can stroll through the Royal Park, the Parc d'Egmont or the Petit Sablon. And as soon as the sun comes out, all students make their way to the Bois de la Cambre, a park bordering the Forest of Soignes, to try their hands at djembé drums or to kick a football around. So breathe in deeply, Brussels is THE green city!

## Tip n° 3

### Try for yourself!

Enjoy the taste of Belgian chocolate, hot waffles or the country's 1600 different beers!

Experience the friendliness of Brussels' inhabitants in a typical café or at any of the numerous festivals held in the capital. Savour the extravagance of Belgian designers in the Dansaert neighborhood. Brussels is THE capital of new trends!





# WELCOME TO IHECS!

## A WORD FROM THE DIRECTOR

IHECS is a university-level college of Communication offering state-recognized Undergraduate and Graduate degrees. We are proud to be the oldest school of this type in the French-speaking part of Belgium.

*Priority to communication!*

*Criticism and conceptualisation remain the central elements of any capacity for judgement and discernment; they are the basis of the training provided at IHECS. But at IHECS, analysis and practice are always at the service of a goal: to transmit a message to a defined audience. The students combine curiosity with an attraction for the singularity of situations and their understanding, openness to all the tools of contemporary communication and an interest in group work.*

*If your ambition is to experiment with communication, to grasp how ideas take shape and form, to transform abstract concepts into targeted campaigns and messages: you are at the right place! Join us at IHECS, our institute is made for you!*

**Frédéric Moens**  
**Head of school**

*«Success is determined by those who prove the impossible is possible»*

James W. Pence



# IHECS IN NUMBERS

## DIPLOMAS AND EDUCATION

- Six official diplomas ;
- Certificates of education called Executive Masters in 'European Public Affairs and Communication', 'Events Management' and 'Digital Communication' ;
- Over 100 lifelong learning modules.

## STUDENTS AND STAFF

- around 3000 students ;
- around 200 teachers and staff members, among half of whom are practising professionals.

## MOBILITY

- About 60 Erasmus partners in Europe and Flanders and 60 worldwide exchange agreements ;
- Over 250 places for exchange students ;
- Internships in Flanders, Europe and outside Europe.

## PROTAGORAS - THINK TANK

IHECS has created a laboratory to exchange ideas and points of view in political and public communication. Protagoras aims to create links between academic research and the professional area. They have a deep reflexion about the impact of communication practices and the impact on medias.

More information : [protagoras.ihecs.be](http://protagoras.ihecs.be)

## INFRASTRUCTURE

- Four buildings located in the heart of Brussels, 350 meters from the Grand Place;
- One complex of high-tech auditoriums, featuring auditoriums with 450, 160 and 130 seats;
- One large auditorium, the *Velge*, shaped like an amphitheatre with 320 seats, including a dedicated set and control room for TV recordings;
- 3 large open spaces with adjustable spaces for multimedia and graphic work;
- One control room for the student web-radio: <https://fluid.airtime.pro/>;
- 5 studios for photo and video;
- 22 edit rooms and networked TV;
- 2 capture studios;
- One equipment-lending centre (HD cameras, digital reflex bodies, a wide range of lenses, professional digital audio recorders, microphones HS, tripods, boompoles, microphones, etc.);
- 1 editorial room for journalism students, also hosting "Mammouth Media", the media of IHECS' students. <https://www.mammouth.media/>;
- WiFi and free access to Internet in all locations.



## INTERNATIONAL EXCHANGES DEPARTMENT

The International Exchanges office is there to help you with all administrative and institutional procedures linked to your exchange period. Our staff is also able to answer your practical questions, to help with your timetable arrangements. Whenever possible, Loïc Hennemont, in charge of incoming students, will try to answer any questions you may have. The International Exchanges office organizes an information meeting on the first day of each semester. Throughout your stay, the International Exchanges office will be looking after you.

### STAFF

The International Exchanges Department is composed of 7 people.

**Sophie Henrard:** Head of Department

**Pilar Jimenez Alba:** in charge of outgoing students

**Loïc Hennemont:** in charge of incoming students

**Inès Frere:** administrative support in the management of outgoing students

**Alisson Pechon:** in charge of international cooperation

**Zoé Moranduzzo:** in charge of internships abroad & international communication

### CONTACT

**erasmus-in@ihecs.be**

# HEAD OF INTERNATIONAL EXCHANGES

**Sophie HENRARD**

*sophie.henrard@galilee.be*



4th floor of *Bord de Verre*  
58-60 Rue de l'Etuve  
1000 Bruxelles

Tél : +32 2 549 55 37



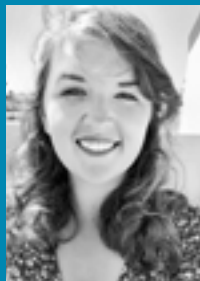
Pilar Jimenez Alba



Loïc Hennemont



Inès Frère



Alisson Pechon



Zoé Moranduzzo





## PARTNERS

3 kinds of partnerships (Bilateral Agreements) are developed:

- ERASMUS: with European countries;
- BELGICA: with Dutch speaking institutions in Belgium;
- WORLDWIDE: with countries which are outside Europe.

## EUROPEAN PARTNERS\*

### AUSTRIA

WIEN • Fachhochschule Wien • [www.fh-wien.ac.at](http://www.fh-wien.ac.at)

### BULGARIA

SOFIA • Nov Bulgarski Universitet • [www.nbu.bg](http://www.nbu.bg)

### CZECH REPUBLIC

PRAGUE • Charles University • [www.cuni.cz](http://www.cuni.cz)

PRAGUE • Anglo-American University • [www.aauni.edu](http://www.aauni.edu)

### DENMARK

AARHUS • Danish School of Media and Journalism • [www.dmjx.dk](http://www.dmjx.dk)

### FINLAND

JYVÄSKYLÄ • University of Jyväskylä • [www.jyu.fi](http://www.jyu.fi)

TAMPERE • University of Tampere • [www.uta.fi](http://www.uta.fi)

### FRANCE

BORDEAUX • Université Michel de Montaigne • [www.iut.u-bordeaux3.fr](http://www.iut.u-bordeaux3.fr)

CLERMONT-FERRAND • Université Clermont Auvergne • [www.uca.fr](http://www.uca.fr)

LILLE • ISTC • [www.istc.fr](http://www.istc.fr)

LILLE • Université de Lille • [www.univ-lille.fr](http://www.univ-lille.fr)

NANCY • Université de Lorraine • [www.univ-nancy2.fr](http://www.univ-nancy2.fr)

PARIS • EFAP/EFJ • [www.efap.com](http://www.efap.com) - [www.efj.fr](http://www.efj.fr)

PARIS • UPEM • [www.u-pem.fr](http://www.u-pem.fr)

PARIS • Sup de Pub • [www.supdepub.com](http://www.supdepub.com)

### GERMANY

DORTMUND • Universität Dortmund/Institut für Journalistik • [www.aaa.uni-dortmund.de](http://www.aaa.uni-dortmund.de)

REGENSBURG • Universität Regensburg • [www.uni-regensburg.de](http://www.uni-regensburg.de)

TÜBINGEN • Eberhard Karls Universität Tübingen • [www.uni-tuebingen.de/en/](http://www.uni-tuebingen.de/en/)

### GREECE

ATHENS • PANTEION - University of Social and Political Science • [www.erasmus.panteion.gr](http://www.erasmus.panteion.gr)

### HUNGARY

SZEGED • University of Szeged • [www.u-szeged.hu](http://www.u-szeged.hu)

SOFIA • New Bulgarian University • <https://www.nbu.bg/en>

### IRELAND

DUBLIN • Dublin Institute of Technology • [www.dit.ie](http://www.dit.ie)

LIMERICK • University of Limerick • [www.ul.ie/international](http://www.ul.ie/international)

### ITALY

PERUGIA • Università Degli Studi Di Perugia • [www.unipg.it](http://www.unipg.it)

ROMA • Libera Università Maria SS. Assunta • [www.lumsa.it](http://www.lumsa.it)

ROMA • La Sapienza • [www.uniroma1.it](http://www.uniroma1.it)

### LATVIA

RIGA • Turība University • [www.turiba.lv](http://www.turiba.lv)

## LITHUANIA

KAUNAS • Vytautas Magnus University • [www.vdu.lt](http://www.vdu.lt)

VILNIUS • Vilniaus Universitetas • [www.vu.lt/en/](http://www.vu.lt/en/)

## NORWAY

VOLDA • Volda University College • [www.hivolda.no](http://www.hivolda.no)

## THE NETHERLANDS

GRONINGEN • University of Applied Sciences, Groningen • [www.hanze.nl](http://www.hanze.nl)

DEN HAAG • Hogeschool Inholland • [www.inholland.nl](http://www.inholland.nl)

UTRECHT • Hogeschool van Utrecht • [www.hu.nl](http://www.hu.nl)

ZWOLLE • Windesheim University of Applied Sciences • [www.windesheim.nl](http://www.windesheim.nl)

## POLAND

WARSAW • Vistula University • <https://vistula.edu.pl/en>

WROCLAW • Uniwersytet Wroclawski • [international.uni.wroc.pl](http://international.uni.wroc.pl)

## PORTUGAL

LISBON • Escola Superior de Comunicação Social • [www.escs.ipl.pt](http://www.escs.ipl.pt)

PORTO • Universidade do Porto • <https://www.up.pt>

## ROMANIA

BUCAREST • University of Bucharest • [www.unibuc.ro](http://www.unibuc.ro)

CLUJ • Babes-Bolyai University • [www.ubbcluj.ro](http://www.ubbcluj.ro)

## SPAIN

BARCELONA • Universitat Autònoma de Barcelona • [www.uab.es](http://www.uab.es)

BILBAO • Universita del país Vasco • [www.ehu.eus](http://www.ehu.eus)

MADRID • Universidad Complutense Madrid • [www.ucm.es](http://www.ucm.es)

MADRID • CEU San Pablo • [www.uspceu.com](http://www.uspceu.com)

MADRID • IE Madrid • [www.ie.edu](http://www.ie.edu)

MALAGA • Universidad de Malaga • [www.uma.es](http://www.uma.es)

SALAMANCA • Universidad de Salamanca • [www.usal.es](http://www.usal.es)

SALAMANCA • Universidad Pontificia de Salamanca • [www.upsa.es](http://www.upsa.es)

SANTANDER • Cesine • [www.cesine.com](http://www.cesine.com)

VALENCIA • Universidad de Valencia • [www.uv.es](http://www.uv.es)

## SWEDEN

GÖTEBORG • University of Gothenburg • [www.gu.se](http://www.gu.se)

JÖNKÖPING • University of Jönköping • [www.ju.se](http://www.ju.se)

## TURKEY

ISTANBUL • Université Galatasaray • [www.gsu.edu.tr](http://www.gsu.edu.tr)

ISTANBUL • Istanbul Bilgi University • [www.bilgi.edu.tr](http://www.bilgi.edu.tr)

## BELGIAN PARTNERS \*

ANTWERPEN • Artesis Hogeschool • [www.artesis.be](http://www.artesis.be)

BRUSSEL • Erasmus Hogeschool (Campus Dansaert) • [www.ehb.be](http://www.ehb.be)

GENT • Artevelde University of Applied Sciences • [www.arteveledehogeschool.be](http://www.arteveledehogeschool.be)

HASSELT • PXL Hogeschool • [www.pxl.be](http://www.pxl.be)  
KORTRIJK • Hogeschool West-Vlaanderen (HOWEST) • [www.howest.be](http://www.howest.be)  
MECHELEN • Thomas More • [www.thomasmore.be](http://www.thomasmore.be)

## OUTSIDE EUROPE PARTNERS \*

### ARGENTINA

BUENOS AIRES • Pontificia Universidad Catolica Argentina • [www.uca.edu.ar](http://www.uca.edu.ar)  
CORDOBA • Universidad Nacional de Cordoba • [www.unc.edu.ar](http://www.unc.edu.ar)

### AUSTRALIA

CANBERRA • University of Canberra • [www.canberra.edu.au](http://www.canberra.edu.au)  
MURDOCH • Murdoch University • <https://www.murdoch.edu.au>

### BRAZIL

BELO HORIZONTE • Universidade Federal de Minas Gerais • [www.ufmg.br](http://www.ufmg.br)  
SAO PAULO • FAAP Fundação Armando Alvares Penteado • <https://www.faap.br>

### BURKINA FASO

OUAGADOUGOU • University of Ouagadougou • [www.univ-ouaga.bf](http://www.univ-ouaga.bf)

### CANADA

MONCTON • Université de Moncton • [www.umoncton.ca](http://www.umoncton.ca)  
QUEBEC • Université Laval • [www.bi.ulaval.ca](http://www.bi.ulaval.ca)  
JONQUIERE • Cégep de Jonquière • [www.cegepjonquiere.ca](http://www.cegepjonquiere.ca)  
SHERBROOKE • Université de Sherbrooke • [www.usherbrooke.ca](http://www.usherbrooke.ca)  
TROIS-RIVIÈRES • Université du Québec à Trois-Rivières • [www.uqtr.ca](http://www.uqtr.ca)

### CHILE

CONCEPCION • Universidad de Concepción • [www.udec.cl](http://www.udec.cl)  
SANTIAGO • Universidad Alberto Hurtado • [www.uahurtado.cl](http://www.uahurtado.cl)  
SANTIAGO • Universidad Diego Portales • [www.udp.cl](http://www.udp.cl)  
SANTIAGO • Universidad Bernardo O'Higgins • [www.ubo.cl](http://www.ubo.cl)  
VALPARAISO • Pontifica Universidad Catolica de Valparaiso • [www.ucv.cl](http://www.ucv.cl)

### CHINA

HONG KONG • City University • [www.cityu.edu.hk](http://www.cityu.edu.hk)  
HONG KONG • Lingnan University • [www.ln.edu.hk](http://www.ln.edu.hk)  
MACAO • University of Macau • [www.umac.mo](http://www.umac.mo)

### COLOMBIA

BOGOTA • Universidad del Rosario • [www.urosario.edu.co](http://www.urosario.edu.co)  
MEDELLIN • Universidad de Medellin • [www.udem.edu.co](http://www.udem.edu.co)  
CARTAGENA • Universidad de Cartagena • [www.unicartagena.edu.co](http://www.unicartagena.edu.co)

### DEMOCRATIC REPUBLIC OF THE CONGO

BUKAVU • Université Catholique de Bukavu • [www.ucbukavu.ac.cd](http://www.ucbukavu.ac.cd)

### ECUADOR

QUITO • Universidad San Francisco de Quito • [www.usfq.edu.ec](http://www.usfq.edu.ec)

### INDIA

MANIPAL • Manipal Academy of Higher Education • [www.manipal.edu](http://www.manipal.edu)



## JAPAN

TOKYO • Waseda University • [www.waseda.jp](http://www.waseda.jp)

NAGOYA • Aichi Shukutoku University • [www.aasa.ac.jp](http://www.aasa.ac.jp)

## KOREA

SEOUL • Ewha Womans University • [www.ewha.ac.kr/mbs/ewhaen](http://www.ewha.ac.kr/mbs/ewhaen)

SEOUL • Sogang University • [www.sogang.ac.kr](http://www.sogang.ac.kr)

## MADAGASCAR

ANTANANARIVO • Université d'Antananarivo • [www.univ-antananarivo.mg](http://www.univ-antananarivo.mg)

## MALAYSIA

KUALA LUMPUR • Taylor's University • <https://university.taylors.edu.my/en>

## MOROCCO

RABAT • Institut Supérieur de l'Information & de la Communication • [www.isic.ma](http://www.isic.ma)

## MEXICO

CUERNAVACA • Universidad Internacional • [www.uninter.edu.mx](http://www.uninter.edu.mx)

GUADALAJARA • Universidad de Guadalajara • [www.udg.mx](http://www.udg.mx)

MERIDA • Universidad Anahuac Mayab • [www.anahuacmayab.mx](http://www.anahuacmayab.mx)

## MOLDOVA

CHISNIAU • Moldova State University • <http://usm.md/?lang=en>

## PERU

LIMA • Universidad San Ignacio de Loyola • [www.usil.edu.pe](http://www.usil.edu.pe)

## SENEGAL

DAKAR • Institut Supérieur des Arts et des Cultures • [www.isac-ucad.sn](http://www.isac-ucad.sn)

## SUISSE

LAUSANNE • Haute Ecole Spécialisée de Suisse Occidentale • [www.hes-so.ch](http://www.hes-so.ch)

## TAIWAN

TAIPEI • Chinese Culture University • [www.pccu.edu.tw/intl/index-e.htm](http://www.pccu.edu.tw/intl/index-e.htm)

TAIPEI • National ChengChi University • [www.nccu.edu.tw](http://www.nccu.edu.tw)

## THAILAND

BANGKOK • Chulalongkorn University • [www.chula.ac.th/en/](http://www.chula.ac.th/en/)

## THE UNITED KINGDOM

BRADFORD • University of Bradford • [www.bradford.ac.uk](http://www.bradford.ac.uk)

GLASGOW • Glasgow Caledonian University • [www.gcu.ac.uk](http://www.gcu.ac.uk)

LONDON • London College of Communication • [www.arts.ac.uk/lcc](http://www.arts.ac.uk/lcc)

ORMSKIRK • Edge Hill University • [www.edgehill.ac.uk](http://www.edgehill.ac.uk)

## THE UNITED STATES OF AMERICA

HIGH POINT • High Point University • [www.highpoint.edu](http://www.highpoint.edu)

LOCK HAVEN • Lock Haven University • [www.lockhaven.edu](http://www.lockhaven.edu)

OKLAHOMA CITY • Oklahoma City University • [www.okcu.edu](http://www.okcu.edu)

SLIPPERY ROCK • Slippery Rock University • [www.sru.edu](http://www.sru.edu)

SPRINGFIELD • University of Illinois • [www.uis.edu](http://www.uis.edu)

## UKRAINE

KIYV • Borys Grinchenko Kyiv University • [www.kubg.edu.ua](http://www.kubg.edu.ua)

## URUGUAY

MONTEVIDEO • Universidad Católica del Uruguay • [www.ucu.edu.uy](http://www.ucu.edu.uy)

MONTEVIDEO • Universidad de Montevideo • [www.um.edu.uy](http://www.um.edu.uy)

## VIETNAM

HANOÏ • Hanoi University • [www.internationaloffice.hanu.vn/](http://www.internationaloffice.hanu.vn/)



## TIPS FOR LIVING IN BRUSSELS

### AVERAGE COST OF LIVING \*

Accommodation per month: 600 €

Food and leisure per month: 400 €

You also have to think about money you'll spend at parties with friends, shopping, visits, etc.

### BANK ACCOUNT

You can either retain your own account or open a Belgian one. If you decide to keep your own, you should ask your bank what their fees are for making European transfers and payments (such as for your accommodation). If you would like to open a Belgian account, you will need your passport and also proof of temporary residence in Bel-

gium. Fees will be smaller with a Belgian account and accounts are free for people under 25.

### TRANSPORT \*

#### TRAVELLING IN BRUSSELS

The public transport network is well developed in Brussels, with trams, buses and a metro (underground) system that will take you anywhere you want to go in the city ([www.stib.be](http://www.stib.be)).

#### TRANSPORT TICKETS

- Contactless payment in the transport (STIB) : 2.30€
- Brupass 1 journey: 2.70€ (+ 5 € for the MOBIB card - optional)
- 10-journey card: 18,90 € (+ 5 € for the MOBIB card - optional) ;
- Brupass 1 day: 9,50 € (+ 5 € for the

MOBIB card - optional)

- Season ticket for students: 12 € (up to 24 years old only) +5 € for the MOBIB card.

## TRAVELLING IN AND OUT OF BELGIUM

To travel all over Belgium, the train is the most efficient transport. When using Eurostar international trains, Brussels is just 1h20 away from Paris, 1h40 from London, and 2h40 from Amsterdam.

Do you plan to visit Belgium by train? You have several options available:

- For students under 26 years old, the Go Pass is an attractive option. Costing just 62€ on the app, it allows you to make 10 one-way journeys anywhere within Belgium.
- Are you planning to go on a trip this weekend? Enjoy a half-price travel with a Weekend-Ticket! Only available if you book a return trip from 7p.m. Friday until Sunday to any destination in Belgium.

To discover Europe by train, attractive options include *InterRail* and *Eurodomino*. The *InterRail* ticket allows you to travel by train for up to one month in some 28 countries, while the *Eurodomino* pass will give you between three and eight days of train travel in the European country of your choice. For more details on these tickets, check the website [www.b-rail.be](http://www.b-rail.be).

Brussels National Airport is located some 20 minutes away from the city centre ([www.](http://www.brusselsairport.be)

[brusselsairport.be](http://brusselsairport.be)). From the airport, you can travel by train to the city's three main Brussels stations (Brussels-Midi, Brussels-Central and Brussels-North) between 6am and midnight (one train every 25 minutes). The airport's train station is situated underground (level -1). A single fare costs 11,20 €.

## Sport

If you would like to practice any sport during your exchange period, we suggest you to ask for the sport card. This card allows you to access the facilities of our partner university (UCL, metrop stop Alma). You will be informed by the International Office at the beginning of the semester. This costs 50€ a year.

## ACCOMMODATION

IHECS does not provide accommodation. But it is often possible to rent the room of an IHECS student (called "kot") who is away on an Erasmus stay (**ONLY during the fall semester!**). Students' rooms are usually furnished houses or apartments accommodating several students who share a kitchen and bathroom but each student has his own bedroom. Students who are interested in this option should send a request to the International Office, who will circulate any offers received. However, it is easier to find a room during the Fall Semester. Some useful websites when searching for accommodation :

[www.spotahome.com](http://www.spotahome.com)  
[www.brukot.be/en/](http://www.brukot.be/en/)  
[www.kots.be](http://www.kots.be)  
[www.student.be/en/student-rooms](http://www.student.be/en/student-rooms)  
[www.infor-jeunes.be/site/kot-a-louer](http://www.infor-jeunes.be/site/kot-a-louer)  
[www.appartager.be/?l=1](http://www.appartager.be/?l=1)

⚠ It is important to be careful while renting a student room. Scams are possible. Do not send money without signing a renting contract.

## INSTAGRAM IHECSPERIENCE

Ihecsperience is a page where you'll find all the useful information to live your exchange at 100%! Belgian recipes, cultural agenda, advice and other stories are available.

## IHECS PROGRAMS

### GENERAL PROGRAMS

The IHECS curriculum in Applied Communication includes two cycles: firstly, a Bachelor's degree (undergraduate) lasting three years, then a two-years Master's degree (graduate) for professional specialization. This 3+2 program conforms to the European structure aimed by the Bologna Agreement. The course at IHECS, in the classical path, are mainly delivered in French.

The first three years of the Bachelor course covers a broad range of communication areas. All the students share the program for the first two years; the third year offers a transition pre-orientation, depending on

the Master's degree being considered. The degree delivered at the end of this first cycle is the Bachelor's degree in Applied Communication.

At Master's level, there are six specialisations available: Journalism, Public Relations, Advertising, Cultural and social communication, Media Literacy and Events Management. To make this professional vocation a reality and to enable every student to create a strong professional identity for themselves, the school provides various training resources :

- students own work is assessed in view of joining the job market;
- the significant presence of professionals in the school's teaching staff, on its juries, and their close involvement in developing and constantly updating programs;
- media work done in close collaboration with the profession and using professional technical resources;
- contact networks with business, groups, associations, public authorities and the organization of meetings with the profession (seminars, conferences, workshops, workdays, etc.);
- IHECS (department IHECS Academy) also organizes Executive Masters as well as training programs which further improve the professional feedback on the initial training.

IHECS focuses on practical experience and vocational development : fieldwork, media productions, project learning, language

and expression, and traineeships. The general courses are the foundation of training. On top of the usual training modules in social communication, IHECS makes significant use of media learning : print media, online press, graphic design and computer graphics, photography, sound/radio, TV/ video, multimedia, and events media. But do bear this in mind: the goal is never to make the technological medium an end in itself. Instead the aim is to be able (MAKING USE OF the media) to express a message, an objective or a given idea. In other words, it's all about communicating. This teaching concept is expressed by the following formula:

**COMMUNICATION BY THE MEDIA  
WORKING FOR COMMUNICATION**

## ENGLISH PROGRAM

IHECS also offers a complete English program for its exchange students. This program blends courses dedicated to English-speaking exchange students with those courses in English which are for all IHECS students. For the full program, see details on separated brochure.

## HOW TO APPLY AT IHECS' INTERNATIONAL PROGRAM?

IHECS' international program is exclusively available to students from institutions which have signed a bilateral agreement for student exchanges with IHECS. First of all, home institutions have to officially nominate by email the selected students

(April 15th for Fall Semester and Full year or October 15th for Spring Semester). After the nomination, the students will directly be contacted with more information about how to apply.

## WHEN TO APPLY?

**Deadlines for nominations to be done by Home institution:**

- Fall semester / Full year: April 15th
- Spring Semester: October 15th

**Deadlines for submitting application material:**

- Fall semester / Full year: May 1st
- Spring Semester: November 1st



*« When you feel as welcomed as at IHECS, the only thing you can do is smile because you know you've done the best choice...despite the rain! »*

> Diana Cánovas Flore - Madrid, Spain

## ACADEMIC CALENDAR

**Fall semester**

**From September to December or  
January**

**Spring Semester**

**From February to May or June**

*Accurate dates will be sent directly  
to students.*

## FAQ

### ECTS CREDITS

ECTS (*European Credits Transfer System*) credits are a numerical value for course units to show how much work a student has to do in order to complete each unit. ECTS are based on a full student workload and not limited to contact hours only. 60 ECTS credits represent the workload of a full academic year. To compare with the US credits: in the USA a full academic year is made up of 30 US credits, based on contact hours. 1 US credit is worth 2 ECTS credits.

### HOW CAN I OBTAIN THE STUDENT VISA?

For non-European citizens, the D visa is mandatory. IHECS requires you to obtain it prior arriving in Belgium (you will have to send the proof). You have to count a minimum of 2 months to get it. You will have to go the closest Belgian Embassy/Consulate. More information:

<https://dofi.ibz.be/sites/dvzoe/EN/Apply->

[cation-guides/Pages/Higher\\_education\\_or\\_preparatory\\_year.aspx](#)

### CAN I TRAVEL IN OTHER COUNTRIES WITH MY STUDENT VISA?

You can go to the countries which are in the Schengen area (Germany, Austria, Belgium, Hungary, Portugal, Iceland, Czech Republic, Slovakia, Italy, Denmark, Latvia, Slovenia, Lithuania, Spain, Sweden, Luxembourg, Switzerland, Estonia, Malta, Finland, Norway, France, The Netherlands, Greece, Poland).

### WHAT TO DO IF I DON'T FIND ANY ACCOMMODATION?

You must immediately contact the International Office to find out what we can offer you. If you are not interested in what we offer, you must look for accommodation by yourself using the links you receive. If you do not find anything after your research, come back to the International Office and we will try to help you solve this problem.

### WHAT SHOULD I DO ON MY ARRIVAL?

You must present yourself to the administration of the district (called "commune") and tell them where you are staying in order to be registered as a foreign student. Student coming from outside Europe have a maximum of 8 days to register.



---

## WHAT SHOULD I DO DURING MY STAY IN BELGIUM?

Attend the courses and prepare the documents your Home Institution needs - and enjoy your stay in Belgium!

---

## WHAT IF I FAIL AN EXAM AT IHECS?

If you fail an exam at IHECS, you will have the opportunity to retake it during our second chance session organised from the end of August to the beginning of September. We also advise you to directly see with your home institution if they offer any other option to retake failed exam.

---

## WHICH LANGUAGES DO THE BELGIANS SPEAK?

Belgium is a trilingual country. People speak French, Dutch or German. Most people speak either French or Dutch. Many people, especially in Brussels, speak also English. IHECS is a French-speaking institution, where students attend courses in French. Even if you are attending the International Program, we advise you to attend a French course before your arrival (to gain the basics). During your stay, you can also attend a French course which is part of the International Program.

---

## DO I NEED HEALTH INSURANCE?

Students must be covered by their own

"healthcare" insurance. This is a necessary formality because IHECS does not organize such insurance. Sometimes, the home institution offers you a good insurance: check with them to see what they offer.

---



*« Doing an exchange at IHECS is for those who long to travel, to experience an intercultural change and to be constantly on the move with creative people. »*

*> Cornelia Cotorobai  
Chisinau, Republic of Moldova*



## INTERNATIONAL EXCHANGES

Rue de l'Étuve 58-60

BE - 1000 Bruxelles

Tel : +32 2 549 55 37

[www.ihecs.be](http://www.ihecs.be)

[sophie.henrard@galilee.be](mailto:sophie.henrard@galilee.be)

F-AS18



INTERNATIONAL  
EXCHANGES

# IHECS

Journalism & Communication



Co-funded by  
the European Union